

DIS. COD. 66.9600.00

- LUBRICATION: Check the oil from time. Change the oil after 50 Hrs. operation and then after every 500 Hrs. We recommend INTERPUMP OIL X-9.9. (SAE 15W40 Mineral) - OIL CAPACITY 1,2
- SCHMIERUNG: Der Ölstand ist in regelmässigen Abständen zu kontrollieren. Der Ölwechsel muss nach den ersten 50 Arbeitsstunden, in der Folge alle 500 Stunden, vorgenommen werden. Es sollte INTERPUMP ÖL X-9.9 (SAE 15W40 Mineral) verwendet werden - Ölinhalt 1,2 ℓ.
- LUBRIFICATION: Contrôler régulièrement le niveau d'huile. La première vidange doit être faite au bout de 50 heures maximum, ensuite faire une vidange toutes les 500 heures, on conseille huile INTERPUMP X-9.9. (SAE 15W40 Minérale) - CAPACITÉ D'HUILE 1,2 ℓ.
- LUBRIFICACIÓN: Controlar periódicamente el nivel del aceite. El cambio del aceite, al comienzo, hay que hacerlo después de 50 horas de trabajo, luego cada 500 horas. Se aconseja aceite INTERPUMP X-9.9. (SAE 15W40 Mineral) - CAPACIDAD 1,2 ℓ.
- LUBRIFICAZIONE: Controllare periodicamente il livello dell'olio. Il cambio dell'olio deve essere fatto inizialmente dopo 50 ore di lavoro, successivamente ogni 500 ore. Si consiglia olio INTERPUMP X-9.9. (SAE 15W40 Minerale) - CAPACITÀ OLIO 1,2 ℓ.



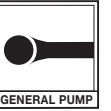
INTERPUMP GROUP

VIA E. FERMI, 25 - 42049 S. ILARIO - REGGIO EMILIA (ITALY)
TEL. +39 - 0522 - 904311 - TELEFAX + 39 - 0522 - 904444
E-mail: info@interpumpgroup.it - http://www.interpumpgroup.it

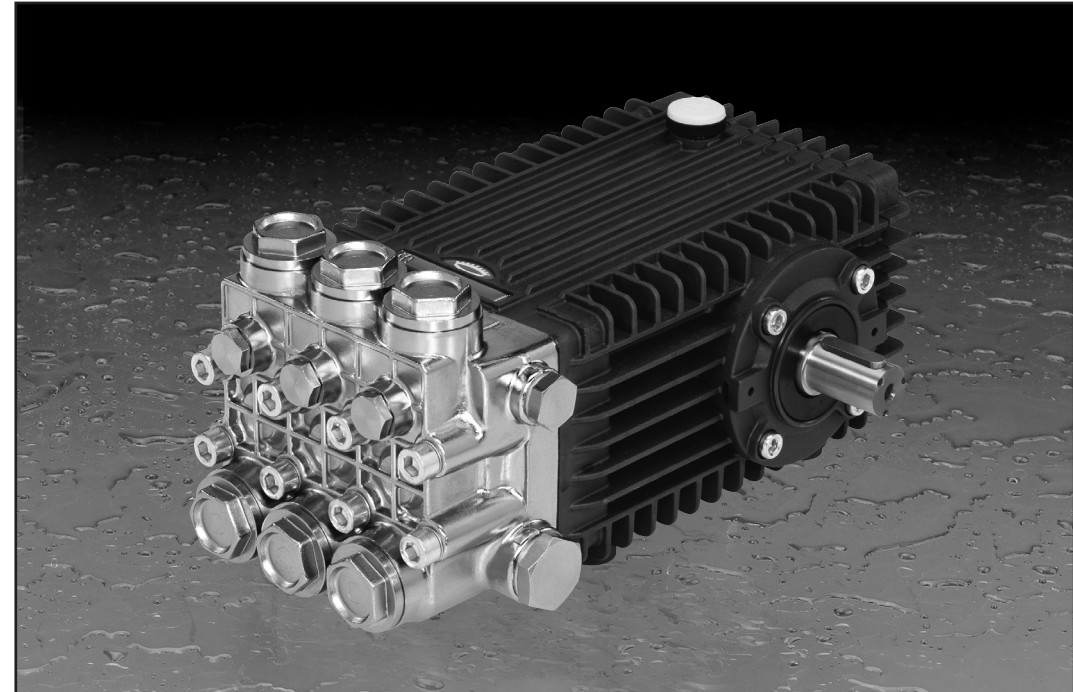


INTERPUMP GROUP

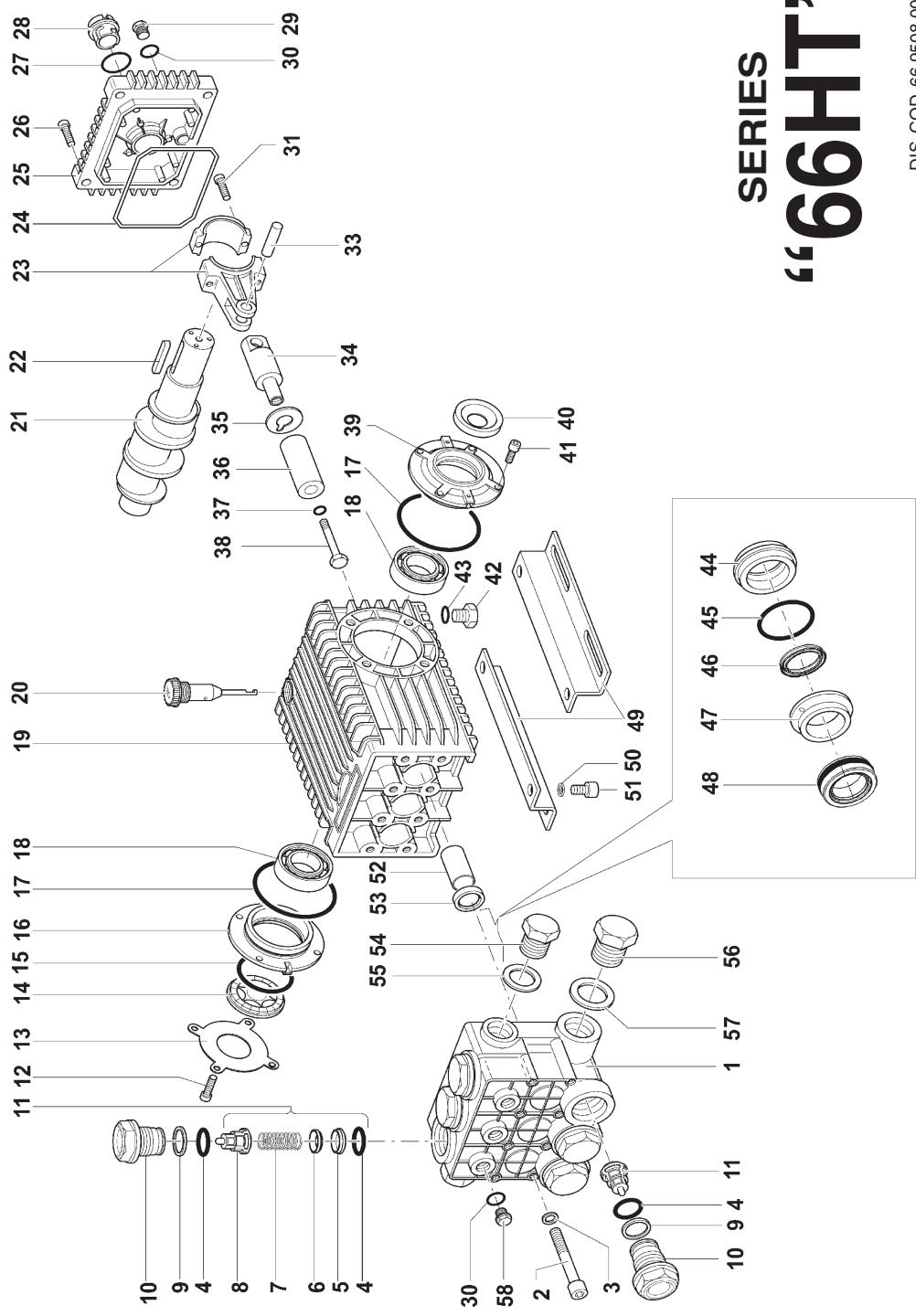
INTERNATIONAL TECHNICAL COMPANY



66HT Series



Pump type	Volume Leistung Débit Caudal Portata		Pressure Druck Presion Presión Pressione		r.p.m. u.p.m. t/min. r/min. g/min.	Required Leistung Puissance Potencia Potenza	Max. temperature Max. Temperatur Température max. Temperatura max.		Weight Poids Gewicht Peso	
	l/min	G.P.M. (USA)	bar	p.s.i.			Hp / kW	°C		°F
HT6628	28	7.4	250	3600	1750	18.2 / 13.38	85	185	18.5	
	19	5	250	3600	1200					12.33 / 9.07
	15	3.96	250	3600	950					10 / 7.35
HT6639	39	10.3	200	2900	1750	20 / 14.7	85	185	18.5	
	32	8.45	200	2900	1450					16.6 / 12.2
HT6646	46	12.15	170	2465	1750	20 / 14.7	85	185	18.5	
	38	10.04	200	2900	1450					19.74 / 14.51



SERIES "66HT"

DIS. COD. 66.9508.00

PISTON - PISTONE Ø 20		PISTON - PISTONE Ø 22		PISTON - PISTONE Ø 24	
MODEL - MODELLO: HT 6628		MODEL - MODELLO: HT 6639		MODEL - MODELLO: HT 6646	
KIT 206	KIT 207	KIT 208	KIT 209	KIT 210	KIT 211
46-48	44-45-46 47-48	46-48	44-45-46 47-48	46-48	44-45-46 47-48

	STANDARD VERSION	HT6628
	VERSIONE STANDARD	HT6639
		HT6646

KIT N.	KIT 2	KIT 3	KIT 169
Position included	53	40	4 - 5 - 6 7 - 8 (11)
Posizioni incluse			
N. pos.	3	2	6

POS.	CODE CODICE	DESCRIPTIONE DESCRIZIONE	N. PCS.
1	66120641	Testata pist. Ø 20 - Nickel	1
	66120741	Testata pist. Ø 22 - Nickel	1
2	66120841	Testata pist. Ø 24 - Nickel	1
3	99380100	Vite M10x90 UNI 5931 8.8 zincata	8
4	90385700	Rosetta Ø 10 UNI 3545	8
5	36203366	OR Ø 23,81x2,62 (132)	12
6	36203476	Sede valvola	6
7	94738800	Valvola	6
8	36203551	Molla Øm. 10x18,5	6
9	90516500	Guida valvola	6
10	66130341	Anello antifest. Ø 24,7x29x1,5	6
11	36712701	Tappo M 32x1,5x29,5 - Nickel	6
12	99306900	Gruppo valvola	6
13	66150274	Vite M8x25 UNI 5931 8.8 zincata	6
14	44211801	Coperchio	4
15	90409700	Distanziale con indicatore	4
16	66150122	OR Ø 55,56x3,53 (159)	1
17	90391300	Coperchio laterale carter	1
18	91838000	OR Ø 67,95x2,62 (3268)	2
19	66110022	Cuscinetto a rulli NJ 2206 EC	2
20	98210600	Carter	1
	66020035	Tappo carico olio G3/8	1
	66020435	Albero HT6628	1
	91489200	Albero HT6639 - HT6646	1
21	66030001	Linguetta	1
22	66160022	Bielle completa	3
23	90392200	OR Ø 133,02x2,62 (3525)	1
24	90188400	Coperchio posteriore	1
25	90405100	Vite M6x20 UNI 5931 8.8 zincata	4
26	63210051	OR Ø 26,58x3,53 (4106)	1
27	98204100	Spia livello olio	1
28	90358500	Tappo G1/4x9	1
29	99309900	Vite M8x35 UNI 5931 8.8 zincata	4
30	97740500	Spinotto Ø 14x39	6
31			3
32			
33			

POS.	CODE CODICE	DESCRIPTIONE DESCRIZIONE	N. PCS.
34	66050064	Guida pistone	3
35	96710100	Rosetta Ø 10x28x0,5	3
	66040009	Pistone Ø 20X54	3
	66040109	Pistone Ø 22X54	3
	66040409	Pistone Ø 24X54	3
37	90358400	OR Ø 10,82x1,78 (2043) - 90Sh.	3
38	66219566	Vite fissaggio pistone	3
39	66150022	Coperchio laterale carter	1
40	90164800	Anello radiate Ø 30x55x7	4
41	99303900	Vite M8x16 UNI 5931 8.8 zincata	1
42	98210000	Tappo G3/8x13	4
43	90383300	OR Ø 13,95x2,62 (3056)	1
44	66081270	Anello di fondo Ø 20	1
	66081370	Anello di fondo Ø 22	3
	66081470	Anello di fondo Ø 24	3
45	90361600	OR Ø 94,65x1,78 (2137)	3
46	90225000	Anello ten. alt. Ø 20x26,15 L.P.	3
	90230000	Anello ten. alt. Ø 22x28,15 L.P.	3
	90235000	Anello ten. alt. Ø 24x30,15 L.P.	3
47	66216070	Anello intermedio Ø 20	3
	66216170	Anello intermedio Ø 22	3
	66216470	Anello intermedio Ø 24	3
48	90226000	Anello ten. alt. Ø 20x30x10 H.P.	3
	90231200	Anello ten. alt. Ø 22x32x10 H.P.	3
	90236000	Anello ten. alt. Ø 24x34x10 H.P.	3
49	47200074	Piedino fissaggio pompa	2
50	96710600	Rosetta Ø 10 DIN 7980	4
51	99364400	Vite M10x18 UNI 5931 8.8 zincata	4
52	90912600	Boccola Ø 22x25x30	3
53	90162500	Anello radiate Ø 22x32x5,5	3
54	98209900	Tappo G3/8x13 Nickel	3
55	96738000	Rosetta Ø 17,5x23x1,5 All.	1
56	98226900	Tappo G3/4x16 Nickel	1
57	96770000	Rosetta Ø 26,5x32x1,5 All.	1
58	98204700	Tappo G1/4x13 Nickel	3